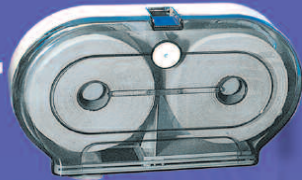




Washroom





### SOAP DISPENSERS - PLASTIC (ALL SOAP DISPENSERS ARE BULK FILL)

#### 550ML

- 550ml Soap dispenser.
- Plastic
- Size: 102 x 90 x 216h (mm)



CODE	DESCRIPTION
<b>714</b>	550ml, plastic, white
<b>714C</b>	550ml, plastic chrome finish

#### 880ML, 1000ML & 1350ML



CODE	DESCRIPTION
<b>SD1000</b>	1000ml soap dispenser white
<b>880CLEARVU</b>	880ml soap dispenser clear
<b>1350CLEARVU</b>	1350ml soap dispenser clear

#### 250ML

- 250ml Soap dispenser
- Plastic
- Size: 55 x 75 x 180h (mm)



CODE	DESCRIPTION
<b>605WIN</b>	250ml, plastic, clear
<b>605</b>	250ml, plastic, white

#### 800ML

- 800ml Soap dispenser, plastic
- Size: 95 x 95 x 250h (mm)



CODE	DESCRIPTION
<b>562</b>	800ml, plastic, clear
<b>562WIN</b>	800ml, plastic, white

#### 1000ML

- 1000ml Soap dispenser
- Plastic
- Size: 130 x 110x 200h (mm)

CODE	DESCRIPTION
<b>615</b>	1000ml, plastic, transparent
<b>615WIN</b>	1000ml, plastic, white



• ALL SOAP DISPENSERS ARE BULK FILL

### SOAP DISPENSERS - S/STEEL

#### 500ML & 1200ML

- Stainless Steel soap dispenser.



CODE	DESCRIPTION	W X D X H
<b>SD1500</b>	1200ml, stainless steel	110 x 65 x 195mm
<b>SD1600</b>	500ml, stainless steel	75 x 50 x 140mm
<b>SD1700</b>	1200ml, rounded, s/steel	145 x 70 x 205mm

### BULK PACK TISSUE DISPENSERS

- Bulk pack tissue dispenser,
- Steel
- Size: 310 x 140 x 110 mm



CODE	DESCRIPTION	CODE	DESCRIPTION
<b>J100</b>	Steel, white	<b>J101</b>	Stainless steel

### “C” FOLD PAPER TOWEL DISPENSER - STEEL

- Paper towel dispenser
- Steel
- Size: 400 x 260 x 140mm (H x W x D)



CODE	DESCRIPTION
<b>J300</b>	Steel, white
<b>J301</b>	Stainless steel

### TISSUE DISPENSERS - STEEL

- Toilet roll holder
- Material: Steel & Stainless steel
- Size: Jumbo - 315 dia. x 140 mm  
Mini - 260 dia. x 125 mm



CODE	DESCRIPTION
<b>J400</b>	Jumbo, steel, white
<b>J402</b>	Mini Jumbo, steel, white
<b>J401</b>	Jumbo, stainless steel
<b>J403</b>	Mini Jumbo, stainless steel



### TOILET TISSUE DISPENSERS - PLASTIC

- Tissue roll holder,
- Plastic, white and transparent
- Size: Jumbo & Mini

CODE	DESCRIPTION	DIMENSIONS
<b>506</b>	Jumbo, white	Dia. 370 x 130mm
<b>507</b>	Jumbo, transparent	Dia. 370 x 130mm
<b>511</b>	Mini, white	Dia. 260 x 130mm
<b>512</b>	Mini, transparent	Dia. 260 x 130mm



### BULK PACK DISPENSERS - PLASTIC

- Bulk pack tissue dispenser
- Plastic, white and transparent
- Size: H305 x W160 x D130mm



CODE	DESCRIPTION
<b>620</b>	Bulk pack tissue dispenser, white
<b>621</b>	Bulk pack tissue dispenser, transparent

- "C" fold dispenser,
- Loads 400 Sheets
- Plastic, white and transparent
- Size: H375 x W280 x D140mm



CODE	DESCRIPTION
<b>592</b>	"C" fold dispenser, white
<b>593</b>	"C" fold dispenser, transparent

### CENTRE FEED DISPENSERS - PLASTIC

CODE	DESCRIPTION	H X W X D (MM)
<b>581</b>	Transparent	335 x 255 x 275
<b>582</b>	Transparent	295 x 165 x 185



### TWIN DISPENSERS - PLASTIC

#### TWIN TOILET ROLL HOLDER

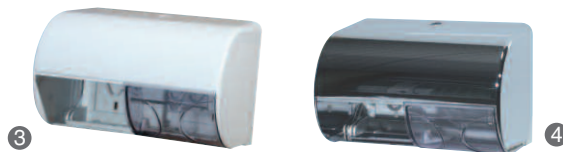
- H290 x W510 x D130mm



CODE	DESCRIPTION	COLOUR
1 <b>594</b>	Twin toilet roll holder	White
2 <b>595</b>	Twin toilet roll holder	Transparent

#### DOUBLE TOILET ROLL HOLDER

- H150 x W260 x D150mm



CODE	DESCRIPTION	COLOUR
3 <b>554</b>	Double toilet roll holder	White
4 <b>554C</b>	Double toilet roll holder	Transparent

### TISSUE BOXES / DISPENSERS

#### FACIAL TISSUE DISPENSERS, PLASTIC L260 x W140 x D60mm



CODE	DESCRIPTION
<b>KBDB</b>	Facial tissue dispenser White
<b>KBDC</b>	Facial tissue dispenser Chrome finish



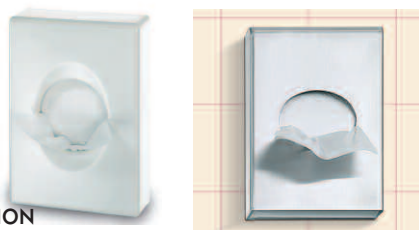
#### CUBE TISSUE DISPENSERS, PLASTIC L130 x W130 x D130mm



CODE	DESCRIPTION
<b>CCDB</b>	Cube tissue dispenser White
<b>CCDC</b>	Cube tissue dispenser Chrome finish

### SANI BAG DISPENSERS & REFILLS

#### SANI BAG DISPENSERS L140 x W100 x D25mm



CODE	DESCRIPTION
<b>HBDB</b>	Sanitary bag dispenser White
<b>HBDC</b>	Sanitary bag dispenser Chrome



#### SANI BAG DISPENSERS REFILLS 48 refills per case, 25 bags per refills



CODE	DESCRIPTION
<b>HBR</b>	Sanitary bag dispenser refills



### BULK PACK & CENTRE FEED DISPENSERS

**BULK PACK DISPENSER**  
with window



CODE H X W X D (MM)  
**DUR1** 300 x 130 x 130

**BULK PACK DISPENSER**



CODE H X W X D (MM)  
**DUR2** 300 x 130 x 130

**MIDI CENTRE FEED DISPENSER**



CODE H X W X D (MM)  
**DUR5** 385 x 240 x 230

### MULTI FOLD DISPENSERS

**MULTI FOLD DISPENSER, LARGE**



CODE H X W X D (MM)  
**DUR6** 400 x 280 x 110

**MULTI FOLD DISPENSER, SMALL**



CODE H X W X D (MM)  
**DUR7** 280 x 280 x 110

**MULTI FOLD DISPENSER, SUPER SLIM**



CODE H X W X D (MM)  
**DUR8** 400 x 280 x 90

### JUMBO & DOUBLE/TRIPLE ROLL HOLDER

**MINI-JUMBO ROLL DISPENSER**



CODE H X W X D (MM)  
**DUR3** 300 x 285 x 130

**TWIN TOILET ROLL DISPENSER**



CODE H X W X D (MM)  
**DUR4** 195 x 325 x 120

**DOUBLE & TRIPLE ROLL HOLDER**

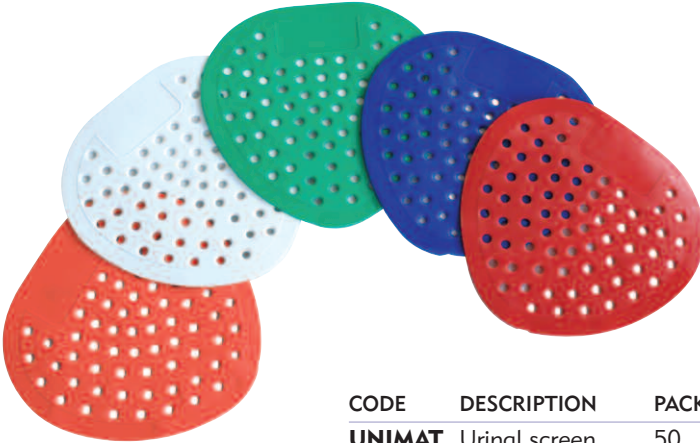


CODE	DESCRIPTION	H X W X D (MM)
<b>DUR9</b>	Double	325 x 130 x 140
<b>DUR10</b>	Triple	430 x 130 x 140

URINAL SCREEN

UNIMAT

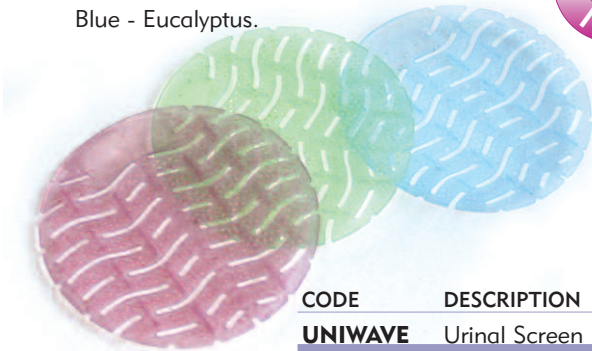
- Urinal Screen, traditional style.
- Fragrances: Orange - citrus      White - cherry  
   Blue - bubblegum      Green - mint  
   Red - red cherry.



CODE	DESCRIPTION	PACK
<b>UNIMAT</b>	Urinal screen	50

UNIWAVE

- Urinal Screen, new wave. Design for better performance.
- Fragrances: Green - Herbal Mint.  
   Pink - Spicy Apple.  
   Blue - Eucalyptus.



CODE	DESCRIPTION	PER BOX
<b>UNIWAVE</b>	Urinal Screen	10

URINAL SCREEN WITH ENZYME BLOC



CODE	PER PACK
<b>UNIBLOC</b>	12

TOILET BRUSHES & HOLDERS

FREE STANDING

- White
- 490 x 150 x 150mm



CODE	DESCRIPTION
<b>574</b>	Free Standing

ECONOMY TOILET BRUSH & HOLDER

CODE **0305**

- White
- 360 x 125 x 125mm



LOO BRUSHES



CODE	DESCRIPTION
<b>1 385285</b>	Toilet brush & holder. Matt
<b>2 364808</b>	Toilet brush & holder. Matt



### GIANT PAPER ROLL HOLDER

#### 1 WALL MOUNTED

**CODE: 533**

- Wall mounted, plastic, white
- 440 x 305x 250mm
- Max roll dimensions: 350mm (Dia) x 340mm



#### 2 WALL MOUNTED WITH PROTECTIVE FAIRING

**CODE: 636**

- Wall mounted with protective fairing,
- Plastic, transparent.
- 440 x 340 x 330mm (H x W x D),
- Max roll dimensions: 280mm (Dia) x 260mm



#### 3 FREE STANDING WITH WHEELS

**CODE: 566**

- White
- 515 x 470x 910mm (H x W x D),
- Max roll dimensions: 420mm (Dia) x 420mm



#### FREE STANDING WITH PROTECTIVE FAIRING

#### 4 CODE: 638

- Plastic, transparent.
- 515 x 470x 910mm (H x W x D)
- Max roll dimensions: 280mm (Dia) x 260mm

#### 5 CODE: 578

Bag holder attachment for **566 / 638**



## HAND DRYERS

## CUB

**CODE: CUB**

- A quality hand dryer manufactured from high impact plastic, automatic start and stop.
- 220/240v; 50/60 hz
- Size: H280 x W255 x D135mm
- Drying time approx. 30 seconds
- Air temperature 70°C @ 20°C ambient.



## CLASSIC

**CODE: CLASSIC**

- An attractive hand dryer manufactured with steel cover, automatic start and stop.
- 220/240v; 50/60 hz,
- Size: H260 x W300 x D185mm
- Air temperature 50°C @ 20°C ambient
- Drying time approx. 20 seconds.



## COMPACT

**CODE: COMPACT**

- Compact and economical hand dryer.
- Automatic start and stop.
- 220/240v; 50/60 hz, 45°C @ 20°C ambient
- Size: H260 x W272 x D140mm
- Drying time approx. 25 seconds.



## CONTOUR

**CODE: CONTOUR**

- Based on the Compact dryer, but with brushed stainless steel cover.
- Automatic start and stop
- 220/240V, 50Hz @ 20°C ambient
- Air temperature 50°C @ 20°C ambient.
- Dry time approx. 25 seconds
- Size: H260 x W272 x D140mm



## SUPERB

**CODE: SUPERB**

- A quality hand dryer with stainless steel cover.
- Automatic start and stop.
- Air temperature 50°C @ 20°C ambient.
- Drying time approx. 20 seconds
- Size: W325 x H220 x D175mm.





## HAND DRYER

**WELL, WHAT CAN ONE SAY ABOUT A HAND DRYER WITH A 5 YEAR PARTS GUARANTEE!  
TOUGH, ROBUST, ATTRACTIVE, RELIABLE, ENOUGH SAID.**

- AA OPTION FITTED WITH PNEUMATIC PUSH BUTTON.
- AE OPTION FITTED WITH AUTOMATIC SYSTEM.
- COLOURS AVAILABLE ON REQUEST.
- MINIMUM QUANTITY 10 ON COLOURS.



### AA OPTION

**CODE: AAW**

- 2300V, 50Hz @ 20°C ambient.
- Air volume: 721/sec
- Output: 2350W
- Dry time approx. 25 seconds
- Size: H313 x W311 x D201mm
- Weight: 8 kg



### AE OPTION

**CODE: AEW**

- 2300V, 50Hz @ 20°C ambient.
- Air volume: 721/sec
- Output: 2350W
- Dry time approx. 25 seconds
- Size: H313 x W311 x D178mm
- Weight: 8 kg



## CHAMPION DRYER

**CODE: CHAMPION**

- SHOCKPROOF ALUMINIUM HOUSING ACTIVATION DISTANCE FROM 10-30CM.
- AUTOMATIC THERMAL CUT-OUT IN CASE OF OVERHEATING
- AUTOMATIC STOP AFTER 2 MINUTES OF CONTINUOUS USE.
- 2 YEAR PARTS GUARANTEE.

Weight: 5.7Kg (H220 x W248 x D170mm)

Colour: white

Connections: 230V - 50Hz

Output: 1800W

Noise level: 64 DBA

Air velocity: 930m/min.



### AEROSOL DISPENSERS

- **CODE: AD250**
- Day / night sensor.
- Battery indicator
- 5/10/15/20/25 minutes setting.



- **CODE: AD260LED**
- Setting from 1 minute to 99 minutes.
- Start/End feature (eg. on at 9.00- off at 18.00)
- Spray alarm.



### 250ML AEROSOL

FOR BOTH AD250 AND AD260LED DISPENSERS.

- Boxed per fragrance 12 aerosols per carton.
- Fabulous Fragrances from:
 

Orange peel	Lemon soda	Grapefruit zest
Lemon grove	Forest fruit	Cranberry
Apple orchard	Vanilla pod	Ocean spray
Meadow	Christmas spice	Baby powder
Neutral fresh		

CODE: AD/FRAGRANCE NAME



### POWER FRESH

- Ideal for large areas, resident lounges, wards, bathrooms, changing rooms, etc.
- 750ml aerosol with mega spray.
- 6 aerosols per carton.
- Fragrance: Cranberry, Citrus and Meadow.
- **CODE: PF/FRAGRANCE**



### AIR FRESHENER & GEL

- Fragrance dispenser, ABS, white
- Constant 30 days release of fragrance
- Constant fan speed over life of battery
- Battery indicator
- Day / night sensor
- **CODE: AIRFRESH**



CODE	PACK
<b>CITRUS GEL</b>	10 per case
<b>LAVENDER GEL</b>	10 per case
<b>JASMINE GEL</b>	10 per case



### PEDAL OPERATED SANITARY BINS

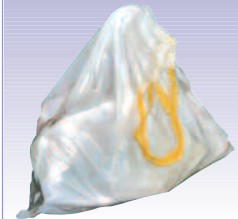
- All plastic construction.
- Slim fits for easy location.
- Ribbed chute helps prevent adhesion
- Easy bag fitting and replacement.
- Grey or white.



### BIN LINERS

**CODE: DRAWSTRING**

- White plastic liner for SANIPED
- 15 bags per roll, 25 rolls per box.
- Size: H710mm x W615mm



CODE	DESCRIPTION
1 <b>SANIPED</b>	23 Litre capacity sanitary bin, pedal operated.
2 <b>MINIPED</b>	12 Litre capacity sanitary bin, pedal operated.

### BABY CHANGING TABLE

#### FEATURES & SPECIFICATIONS

- 5 year guarantee.
- Compact and slim profile.
- Moulded in high density polyethylene for strength and easy of cleaning, no sharp edges and smooth to the touch.
- Gas strut to allow controlled opening and closing.
- Safety strap with childproof buckle.
- Available in white only.



CODE	DESCRIPTION	SIZE
3 <b>BABYCHANGER</b>	Baby changing table	834 x 516 x 100mm

### 50 LITRE NAPPY BINS

- Manufactured in medium density polyethylene making the bin more hygienic, due to its smooth-easy clean surface and durable production.
- Chute allows discrete use of bin with no visibility of its contents.
- Designed to be used with or without a bag liner.
- Well designed handle for transporting or moving.



CODE	DESCRIPTION	H X W X D
4 <b>NAP/YELLOW</b>	50 litre, nappy bin. Yellow	530 x 400 x 360mm
5 <b>NAP/GREY</b>	50 litre, nappy bin. Grey	530 x 400 x 360mm

### PEDAL OPERATED NAPPY BINS

- All plastic construction, except push rod.
- Colour White only.
- Unit is fitted with de-odoriser and bag holders.
- With modesty chute.



CODE	DESCRIPTION
6 <b>NAP1PED</b>	50 Litre, pedal operated.

### CLINICAL WASTE 50 LITRE PEDAL BIN

- 50 Litre pedal bin,
- Yellow, White or Grey
- New bag fitting ensures snag free operation
- 570 x 235 x 245mm (H x W x D)

CODE	DESCRIPTION
7 <b>5120</b>	50 Litre pedal bin



Wheeled bins see Page 230